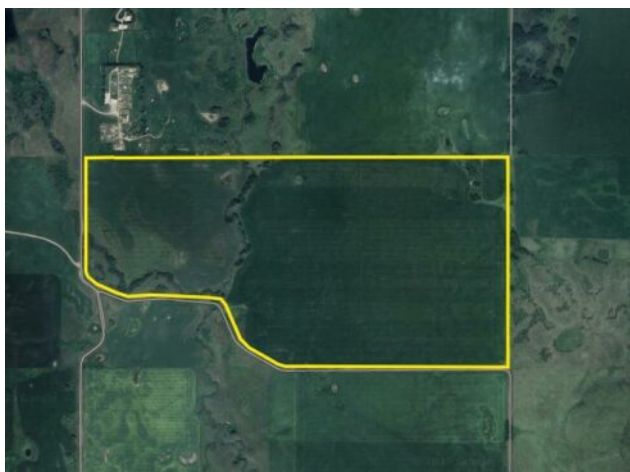


RR 25 & TWP RD 272a
Rural Rocky View County, Alberta

MLS # A2200307



\$3,100,000

Division: NONE

Cur. Use: Agricultural

Style: -

Size: 0 sq.ft. Age: -

Beds: - Baths: -

Garage: -

Lot Size: 279.00 Acres

Lot Feat: -

Heating: -

Water: -

Floors: -

Sewer: -

Roof: -

Near Town: Airdrie

Basement: -

LLD: 17-27-2-W5

Exterior: -

Zoning: Ag

Foundation: -

Utilities: -

Features: -

Major Use: Other

Nw & Ne 17-27-2 w5 Prime Farmland For Sale 279 titled acres with 253 crop acres of high-quality, highly fertile soil for sale in Rocky View County. Two 240KV High Voltage Powerlines and lots of water. Sloped facing south. Located on the north side of Calgary and west of Airdrie, this productive land offers excellent crop potential and includes powerline income and agricultural zoning. With stunning mountain views, it is just 30 minutes from Calgary International Airport, Springbank Airport, and downtown Calgary.