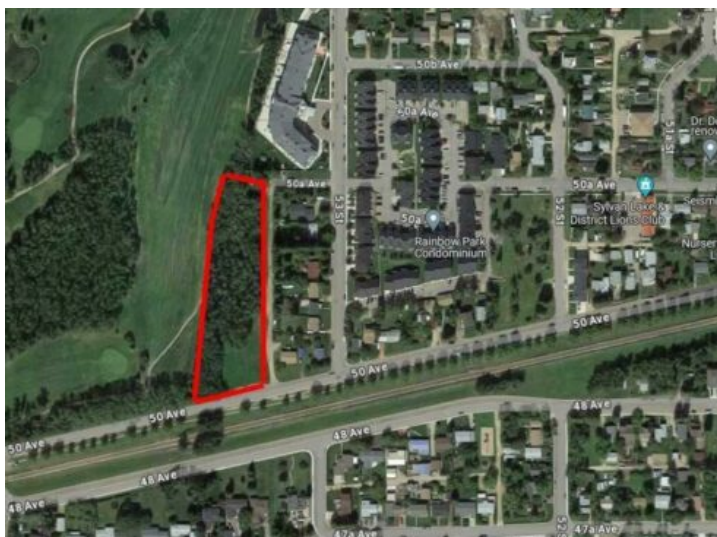


5310 50 Avenue
Sylvan Lake, Alberta

MLS # A2183679



\$1,099,000

Division:	Downtown
Lot Size:	2.29 Acres
Lot Feat:	Near Golf Course, No Neighbours Behind, On Golf Course
By Town:	-
LLD:	-
Zoning:	WDCD - Waterfront Direct
Water:	Public
Sewer:	-
Utilities:	Electricity, Natural Gas

Multi-family or townhouse development site with 600' of frontage on the picturesque Sylvan Lake Golf and Country Club. Plans may be available for a large commercial and residential condo. Alternatively, it would be ideal for a multi-family investment property in a market where the vacancy rate is currently almost zero. Property is just short walk to downtown and the beach.