

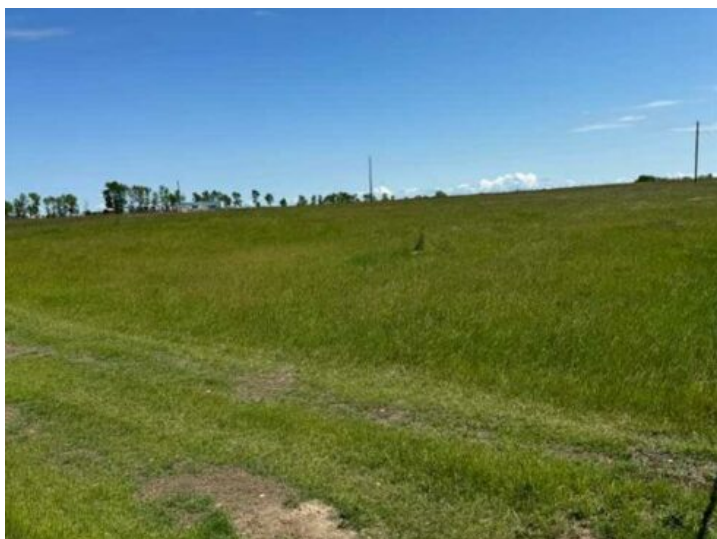


780-832-5880

cord@gpremax.com

Range Road 243 Township Road 242 A
Rural Wheatland County, Alberta

MLS # A2180263



\$2,500,000

Division: NONE

Lot Size: 30.85 Acres

Lot Feat: -

By Town: Strathmore

LLD: 17-24-25-W4

Zoning: 1

Water: None

Sewer: -

Utilities: -

30 Acres of amazing holding value, or potential for anything you could dream, business, land development, build your dream home! Located just west of Strathmore with Highway 1 frontage-You name it amazing location, great views. Situated just off Highway 1 with Service road access- Located in County of Wheatland, an amazing County to work with