

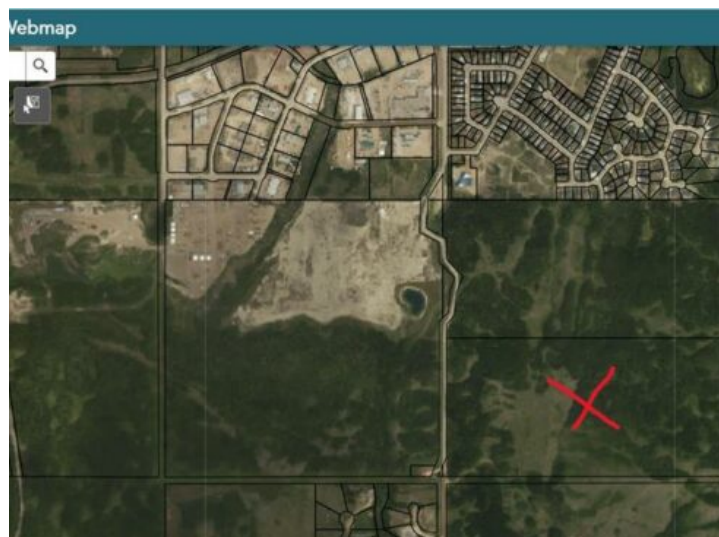


780-832-5880

cord@gpremax.com

10101 68 Street
Peace River, Alberta

MLS # A2176154



\$800,000

Division: Saddleback Ridge

Lot Size: 79.11 Acres

Lot Feat: -

By Town: -

LLD: 25-82-22-W5

Zoning: R1-A

Water: -

Sewer: -

Utilities: -

Here is 79.11 acres of future residential development land located within the town limits of Peace River. Located close to Saddleback Ridge, this is the logical future development location for Peace River. Close to all of the West Hill amenities, restaurants and retail development, you know this land will have a high degree of desirability based on location alone. Buy this land in anticipation of great things in the future for Peace River.