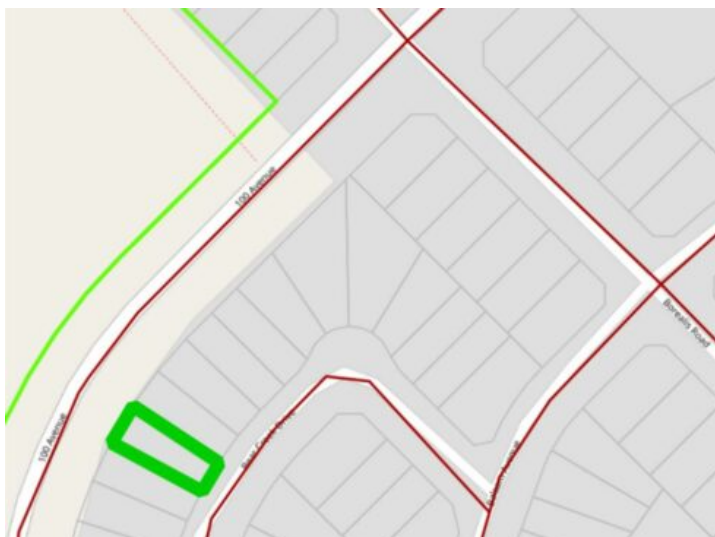


23 Bear Creek Drive
High Level, Alberta

MLS # A1027876



\$42,750

Division: NONE

Lot Size: 0.12 Acre

Lot Feat: -

By Town: -

LLD: -

Zoning: Residential

Water: Public

Sewer: Public Sewer

Utilities: Electricity at Lot Line, Natural Gas at Lot Line

There are so many reasons why this may be the perfect location for your new home. LOCATION, LOCATION, LOCATION!!! Close to the hospital, shopping, the Toy Lending Library and then there's the price? This neighborhood is zoned R-2 which means manufactured and modular homes, an economical alternative to stick built homes, are permitted uses. DEVELOPERS?? An awesome location to build revenue properties.