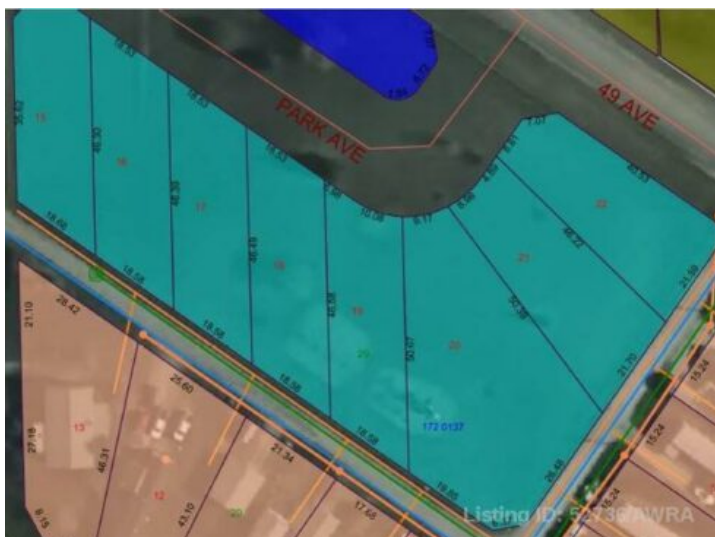


**5 PARK AVE (48 AVE)
Mayerthorpe, Alberta**

MLS # A2285366



\$26,900

Division: NONE

Lot Size: 0.37 Acre

Lot Feat: -

By Town: -

LLD: -

Zoning: R2

Water: -

Sewer: -

Utilities: -

Build on a new street with a park out your front window! This is the largest lot on the street! Lots are now FULLY SERVICED and offer a well thought out new development in Mayerthorpe. The Park Avenue Playground and Outdoor Fitness Facility is just across the street - such an amazing addition to the value of the lot. This street is zoned for new homes only and there is plenty of room for a garage.