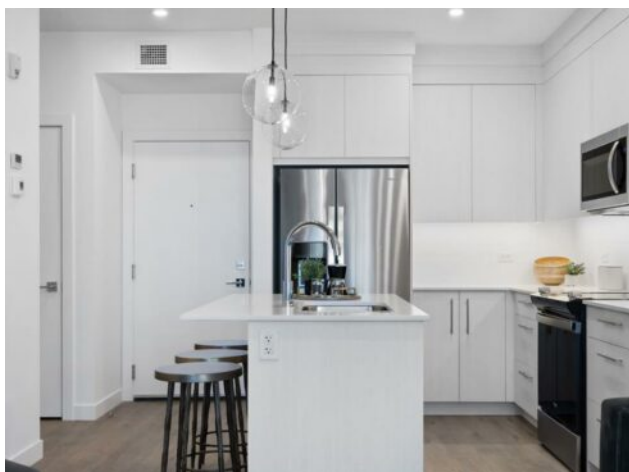


2210, 6 Merganser Drive W
Chestermere, Alberta

MLS # A2283146

\$279,900



Division:	Chelsea_CH		
Type:	Residential/Low Rise (2-4 stories)		
Style:	Apartment-Single Level Unit		
Size:	585 sq.ft.	Age:	2024 (2 yrs old)
Beds:	1	Baths:	1
Garage:	Stall		
Lot Size:	-		
Lot Feat:	-		

Heating:	Baseboard	Water:	-
Floors:	Vinyl Plank	Sewer:	-
Roof:	Membrane	Condo Fee:	\$ 261
Basement:	None	LLD:	-
Exterior:	Composite Siding	Zoning:	M-2
Foundation:	Poured Concrete	Utilities:	-
Features:	See Remarks		

Inclusions: na

TRUMAN-built 1-Bedroom, 1-Bathroom condo in the highly desirable community of Chelsea, Chestermere. Perfectly combining style, comfort, and value, this Lockwood home offers everything you need in a low-maintenance lifestyle—plus quick access to parks, pathways, and Chestermere Lake for year-round recreation. Inside, you’ll find a bright and airy open-concept layout designed for modern living. The kitchen stands out with full-height cabinetry, soft-close doors and drawers, quartz countertops, and a sleek stainless steel appliance package. The living area opens to your private balcony, giving you the perfect space to unwind at the end of the day. The Bedroom and 4-piece bathroom provide a comfortable retreat, while in-suite laundry and a titled parking stall add convenience and peace of mind. *Photos gallery of similar unit, stay tuned for a new gallery.