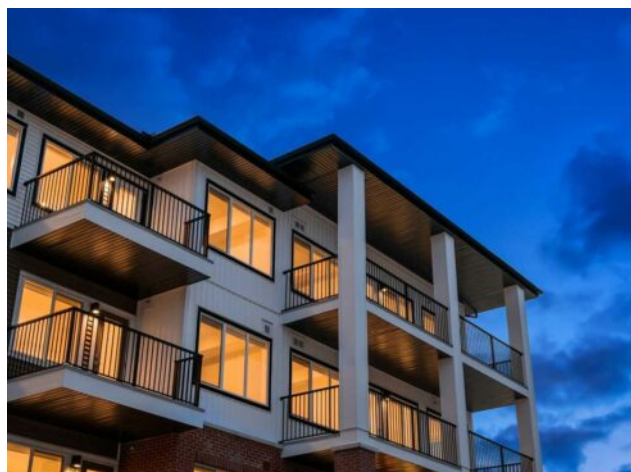


2302, 6 Merganser Drive W
Chestermere, Alberta

MLS # A2283145



\$339,900

Division:	Chelsea_CH		
Type:	Residential/Low Rise (2-4 stories)		
Style:	Apartment-Single Level Unit		
Size:	840 sq.ft.	Age:	2024 (2 yrs old)
Beds:	3	Baths:	2
Garage:	Underground		
Lot Size:	-		
Lot Feat:	-		

Heating:	Baseboard	Water:	-
Floors:	Vinyl Plank	Sewer:	-
Roof:	Membrane	Condo Fee:	\$ 356
Basement:	None	LLD:	-
Exterior:	Composite Siding	Zoning:	M-2
Foundation:	Poured Concrete	Utilities:	-
Features:	See Remarks		

Inclusions: na

Experience the perfect balance of space, style, and convenience in this TRUMAN-built 3-bedroom, 2-bathroom + den residence at Lockwood in Chelsea. Thoughtfully designed for modern living, this home stands out with its open floorplan and large balcony—ideal for enjoying fresh air and sunshine. Inside, you’ll find a bright open-concept layout with a well-appointed kitchen featuring full-height cabinetry, soft-close doors and drawers, quartz countertops, and a sleek stainless steel appliance package. The great room flows seamlessly to the dining area and balcony, creating a natural gathering space for friends and family. The versatile den offers flexibility for a home office, hobby space, or reading nook, while the three bedrooms provide room for everyone. The primary bedroom includes a walk-in closet and private ensuite, while a second full bathroom and convenient in-suite laundry add everyday functionality. Complete with a titled parking stall, this home offers unbeatable access to parks, pathways, and Chestermere Lake—perfect for year-round recreation. Shopping, dining, and daily conveniences at Chestermere Station and Chestermere Crossing are just minutes away, making life simple and connected. Whether you’re looking for a spacious new home or a smart investment in one of Chestermere’s fastest-growing communities, this Lockwood residence is a rare opportunity you don’t want to miss. *Photos are of a similar unit.