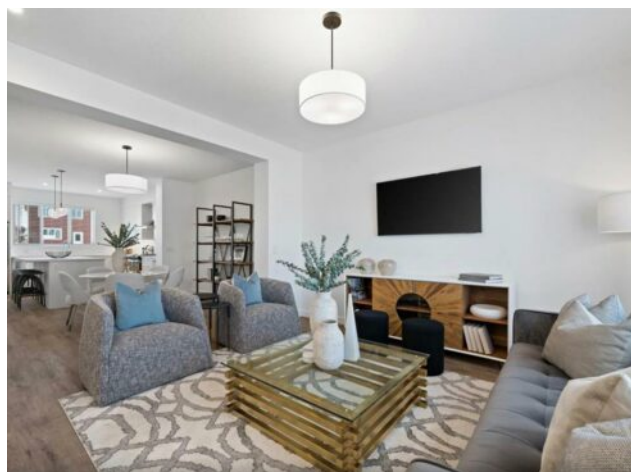


552 Lewisburg Place NE
Calgary, Alberta

MLS # A2283137



\$584,900

Division:	Lewisburg		
Type:	Residential/House		
Style:	2 Storey		
Size:	1,620 sq.ft.	Age:	2025 (1 yrs old)
Beds:	3	Baths:	2 full / 1 half
Garage:	Off Street		
Lot Size:	0.06 Acre		
Lot Feat:	Back Lane		

Heating:	Forced Air	Water:	-
Floors:	Vinyl Plank	Sewer:	-
Roof:	Asphalt Shingle	Condo Fee:	-
Basement:	Full	LLD:	-
Exterior:	Vinyl Siding, Wood Frame	Zoning:	R-G
Foundation:	Poured Concrete	Utilities:	-
Features:	Kitchen Island, Separate Entrance		

Inclusions: na

This beautifully designed home by TRUMAN pairs contemporary architecture with refined finishes and meticulous attention to detail, offering a rare opportunity to own in Lewisburg—one of Calgary’s newest and most thoughtfully planned communities. With three spacious bedrooms and a bright, open-concept floor plan, this home is crafted for modern living without compromise. At the rear of the home, the chef-inspired kitchen is as functional as it is stylish—featuring full-height cabinetry with soft-close doors and drawers, elegant quartz countertops, a premium stainless steel appliance package, and a generous pantry to keep everything organized. The main floor impresses with soaring 9' ceilings and durable luxury vinyl plank flooring, creating a seamless flow between the living and dining areas—perfect for both everyday living and entertaining. Upstairs, the primary suite offers a private retreat with a walk-in closet and a sleek 3-piece ensuite. Two additional bedrooms provide versatile space for children, guests, or a home office, while a 4-piece main bath and convenient upper-level laundry with included washer and dryer make daily life effortless. The unfinished basement with a separate side entrance is a rare and valuable feature, offering endless potential. Life in Lewisburg means enjoying a community that blends tranquility with connectivity. Surrounded by parks, pathways, and green spaces, it invites an active, outdoor lifestyle while keeping you close to major routes, shopping, and city amenities. *Photo gallery of similar home*