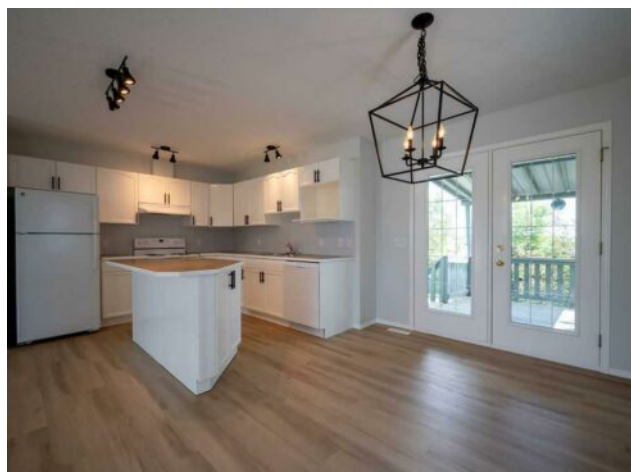


**269 Strathford Crescent  
Strathmore, Alberta**

**MLS # A2282012**



# \$509,900

<b>Division:</b>	Strathaven		
<b>Type:</b>	Residential/House		
<b>Style:</b>	Bungalow		
<b>Size:</b>	1,090 sq.ft.	<b>Age:</b>	1999 (27 yrs old)
<b>Beds:</b>	3	<b>Baths:</b>	3
<b>Garage:</b>	Double Garage Attached		
<b>Lot Size:</b>	0.12 Acre		
<b>Lot Feat:</b>	Back Yard, Landscaped, Private, Rectangular Lot, Treed		

<b>Heating:</b>	Forced Air	<b>Water:</b>	-
<b>Floors:</b>	Carpet, Vinyl	<b>Sewer:</b>	-
<b>Roof:</b>	Asphalt Shingle	<b>Condo Fee:</b>	-
<b>Basement:</b>	Full	<b>LLD:</b>	-
<b>Exterior:</b>	Vinyl Siding	<b>Zoning:</b>	R1
<b>Foundation:</b>	Poured Concrete	<b>Utilities:</b>	-
<b>Features:</b>	Kitchen Island, Open Floorplan, Storage		

**Inclusions:** N/A

Welcome to this beautifully renovated bungalow tucked away on a quiet street in the charming community of Strathmore. Offering the perfect blend of modern updates and small-town living, this home is move-in ready and packed with value. Step inside to discover new luxury vinyl plank flooring, plush upgraded carpet, and stylish modern fixtures throughout. Freshly painted from top to bottom, the home feels bright, clean, and contemporary. The spacious layout includes three generous bedrooms, ideal for families, downsizers, or anyone seeking single-level living. Outside, enjoy your private backyard oasis—a great space for summer BBQs, kids, pets, or simply relaxing in peace. The double detached garage adds both convenience and ample storage. Located in the heart of Wheatland County, Strathmore offers a warm, welcoming vibe with all the amenities you need—and just a short drive from Calgary. Don't miss your chance to own this turnkey gem on a quiet street in one of Alberta's most desirable small towns. Book your showing today!