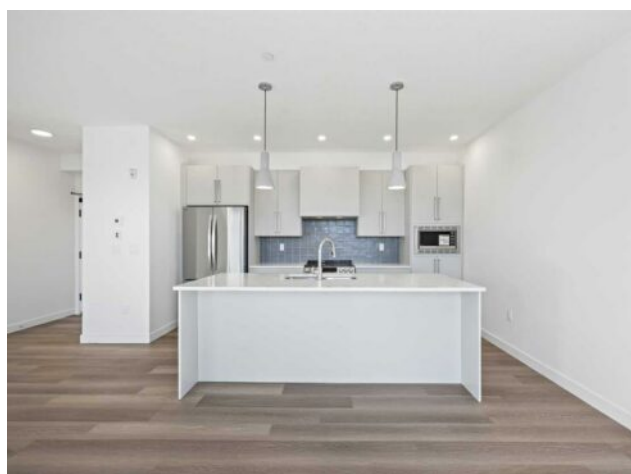


**2215, 520 Reynolds Avenue SW
Airdrie, Alberta**

MLS # A2276625

\$355,000



Heating:	Baseboard, Boiler	Water:	-
Floors:	Carpet, Tile, Vinyl Plank	Sewer:	-
Roof:	Membrane	Condo Fee:	\$ 407
Basement:	-	LLD:	-
Exterior:	Brick, Composite Siding, Wood Frame	Zoning:	R3
Foundation:	Poured Concrete	Utilities:	-
Features:	Kitchen Island, Quartz Counters, Recessed Lighting, Vinyl Windows, Walk-In Closet(s)		

Inclusions: Fob for doors

Welcome to The Monarch, where modern design blends seamlessly with everyday comfort. This thoughtfully designed 1 bedroom, 1 bathroom suite offers 9-foot ceilings and refined finishes throughout, including quartz countertops, contemporary pot lighting, triple-glazed windows, and wall-mounted air conditioning for year-round comfort. Enjoy outdoor living on a private south-facing balcony overlooking Cooper Promenade, while benefiting from a prime location close to parks, schools, and convenient access to 40th Avenue and Highway 2, making commuting simple and efficient. Residents of The Monarch have access to more than 4,000 sq. ft. of premium amenities, featuring a welcoming resident lounge, fully equipped fitness centre, yoga studio, and a family room with an expansive outdoor deck. The community also includes a pet wash station, two elevators in each building, two rooftop terraces with stunning views, and guest suites available in both buildings—perfect for hosting visitors. Experience a sophisticated yet comfortable condo lifestyle at The Monarch