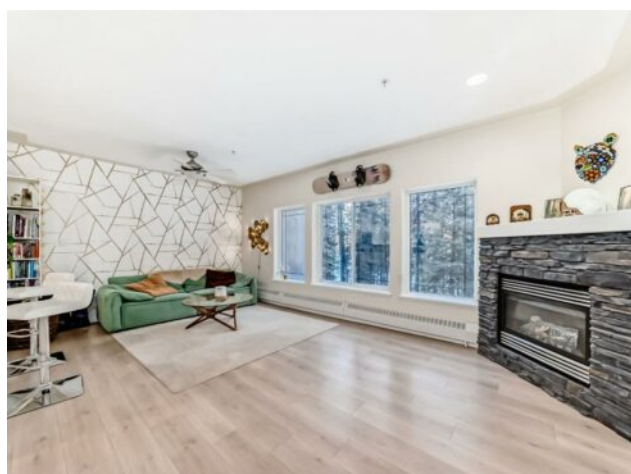


114, 30 Discovery Ridge Close SW
Calgary, Alberta

MLS # A2276590

\$399,900



Heating:	Baseboard	Water:	-
Floors:	Laminate, Linoleum	Sewer:	-
Roof:	Membrane, Metal	Condo Fee:	\$ 453
Basement:	-	LLD:	-
Exterior:	Concrete, Stone, Stucco	Zoning:	DC (pre 1P2007)
Foundation:	-	Utilities:	-
Features:	Breakfast Bar, Ceiling Fan(s), Elevator, Granite Counters, Recessed Lighting, Storage		

Inclusions: 2 fobs

An executive tree house in the city - like living in Banff! A rare find - this spacious 865 sq ft one bedroom plus den in a concrete building is perfect for the outdoor enthusiast who loves to hike through the tranquil Griffith Woods (93 hectare nature park) along the Elbow River. Lovely updates - recessed lighting, white kitchen, granite countertops, stone fireplace with large mantle, covered balcony with a gas hook up for the BBQ. The Wedgewoods Fitness Centre is right across the hall. Private. Close to the mountains, amenities and 15 minutes to downtown. Well run complex.