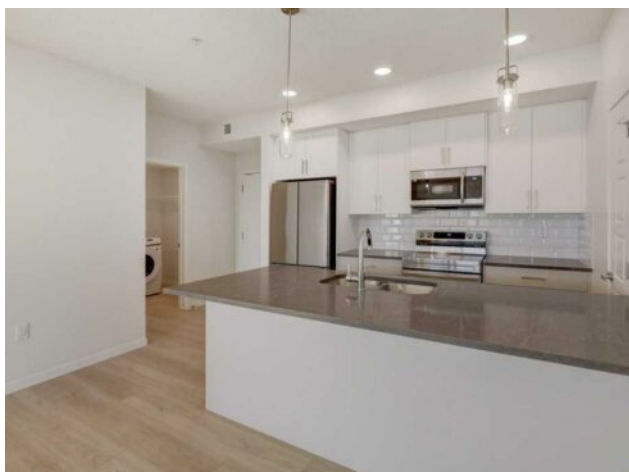


**124, 245 Edith Place NW
Calgary, Alberta**

MLS # A2275305



\$369,900

Division:	Glacier Ridge		
Type:	Residential/Low Rise (2-4 stories)		
Style:	Apartment-Single Level Unit		
Size:	916 sq.ft.	Age:	2025 (0 yrs old)
Beds:	2	Baths:	2
Garage:	Titled, Underground		
Lot Size:	-		
Lot Feat:	-		

Heating:	Baseboard, Natural Gas	Water:	-
Floors:	Vinyl	Sewer:	-
Roof:	Flat, Membrane	Condo Fee:	\$ 362
Basement:	-	LLD:	-
Exterior:	Composite Siding, Concrete, Wood Frame	Zoning:	DC
Foundation:	Poured Concrete	Utilities:	-
Features:	High Ceilings, Kitchen Island, Open Floorplan, Storage, Walk-In Closet(s)		

Inclusions: N/A

INTRODUCING GLACIER RIDGE, IN BEAUTIFUL NORTHWEST CALGARY. BUILT BY CEDARGLEN LIVING, WINNER OF THE Customer Insight BUILDER OF CHOICE AWARD, 6 YEARS RUNNING! BRAND NEW "GR07R" unit with high-spec features. You will feel right at home in this well thought-out, 915.99 RMS sq.ft. 2 bed, 2 bath home with open plan, 9' ceilings, LVP flooring throughout (NO CARPET), Low E triple glazed windows, BBQ gas line on the patio, Fresh Air System (ERV), A/C rough-in, and so much more. The kitchen is spectacular with full height, two tone cabinets, quartz counters, upgraded bank of drawers for pots and pans, undermount sink, rough-in water line to the fridge and S/S appliances. The island is extensive with built in flush breakfast bar, which transitions into the spacious living area, perfect for entertaining. The spacious primary bedroom has a large bright window (triple pane windows) and huge walk-in closet. You'll be impressed with the 4pc ensuite with double vanities and stand up shower. The second bedroom is located on the other side of the unit for privacy and a 4pc bath with quartz counters, and undermount sink is located next to it. Nearby is the spacious laundry/storage room, this is a must see (washer & dryer included). Highlights include: Hardie board siding, designer lighting package, sound reducing membrane to reduce sound transmission between floors, clear glass railing to balconies and 1 titled underground parking stall included. A once in a lifetime community in Northwest Calgary. Framed by views of the Rocky Mountains and distinguished by natural coulees that cross the land, Glacier Ridge offers a rare chance for families to live in a new community. PET FRIENDLY COMPLEX, IMMEDIATE POSSESSION AVAILABLE AND DON'T FORGET TO CHECK OUT THE VIRTUAL TOUR.