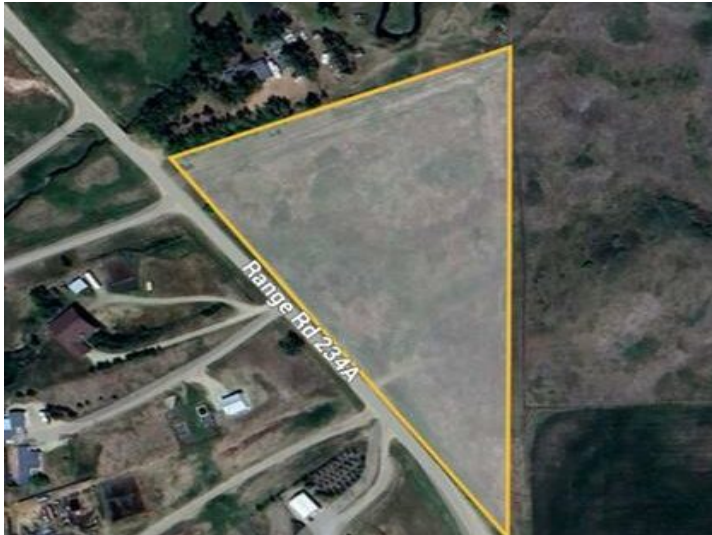


RR 234 Trochu  
Rural Kneehill County, Alberta

MLS # A2274727



## \$155,000

Division: NONE

Lot Size: 5.40 Acres

Lot Feat: -

By Town: Trochu

LLD: 8-33-23-W4

Zoning: CR

Water: None

Sewer: -

Utilities: Electricity at Lot Line

Build your dream home on this vacant 6.57+/- Acre parcel just south of the town of Trochu Alberta; Trochu has a New school, restaurants, nine hole golf course and many more amenities. Power is available at NW corner of property, and has been paid by the Seller. The access driveway road has been built. Seller has purchased the road allowance on east side of property which not only adds 1.4 acres to overall size, it also dramatically changes the potential placement of any buildings as the additional width of property has changed significantly. Gives a definite option of a walkout basement option.