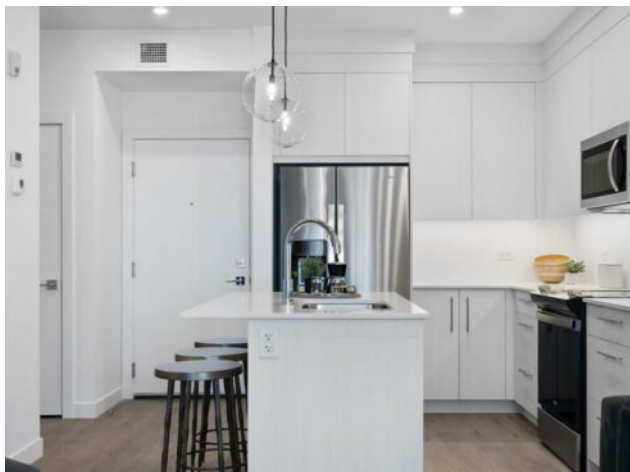


2210, 6 Merganser Drive W

Chestermere, Alberta

MLS # A2273252



\$279,900

Heating:	Baseboard	Water:	-
Floors:	Vinyl Plank	Sewer:	-
Roof:	Membrane	Condo Fee:	\$ 261
Basement:	None	LLD:	-
Exterior:	Composite Siding	Zoning:	M-2
Foundation:	Poured Concrete	Utilities:	-
Features:	See Remarks		

Inclusions: N/A

TRUMAN-built 1-Bedroom, 1-Bathroom condo in the highly desirable community of Chelsea, Chestermere. Perfectly combining style, comfort, and value, this Lockwood home offers everything you need in a low-maintenance lifestyle—plus quick access to parks, pathways, and Chestermere Lake for year-round recreation. Inside, you’ll find a bright and airy open-concept layout designed for modern living. The kitchen stands out with full-height cabinetry, soft-close doors and drawers, quartz countertops, and a sleek stainless steel appliance package. The living area opens to your private balcony, giving you the perfect space to unwind at the end of the day. The Bedroom and 4-piece bathroom provide a comfortable retreat, while in-suite laundry and a titled parking stall add convenience and peace of mind. *Photos gallery of similar unit, stay tuned for a new gallery.