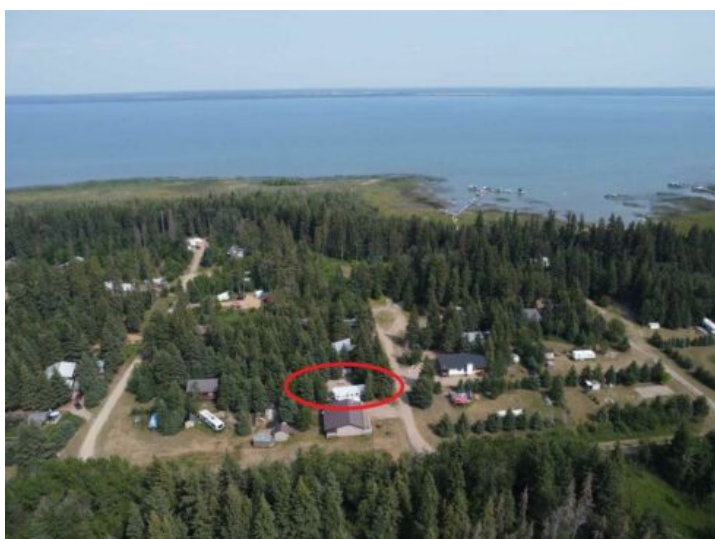


**626 Willow Bay
Brightsand Lake, Saskatchewan**

MLS # A2271061



\$134,900

Division: NONE

Lot Size: 0.22 Acre

Lot Feat: -

By Town: -

LLD: -

Zoning: Residential

Water: -

Sewer: -

Utilities: -

Lake lot with a 40-foot Park Model RV at Brightsand Lake, Saskatchewan. Ready for immediate possession. Lot 626 at Willow Bay measures 70 feet by 135 feet. The lot is fully equipped with a water well, septic system, and ample power. The Park Model trailer has very few miles on it, having been parked at the lake most of the time. It features three slide outs that open to make a bright and roomy interior. The master bedroom offers a comfortable queen bed with plenty of cabinets for storage, plus a TV for relaxing evenings. The 3-piece bathroom is perfect for your convenience. The well-appointed kitchen comes with a full-size fridge, and the dining table conveniently folds into a bed for extra sleeping space. Stay warm on those cooler nights with the cozy living room fireplace. The rear bedroom has bunk beds that are perfect for the kids (or grandkids), plus it has a separate table area for fun and games. The storage shed isn't just a storage shed. It features a washer, dryer, and on-demand hot water system, plus an outdoor shower that is a must have after a day of fun by the lake. The gazebo with a cozy fire pit is the perfect place to relax and enjoy the long evenings and quality time with family and friends under the stars. RVs are allowed with a permit from the Rural Municipality office. Brightsand Lake Regional Park is close by and features a restaurant, golf course, campground, playground, and boat launch. For groceries and gas for the boat, take a quick drive to the town of St. Walburg or Turtleford. Brightsand Lake is a 90 minute drive north east of Lloydminster, about a 2 & 1/2 hour drive from Saskatoon, and about 3 hours & 45 minutes from Edmonton. Call to view.