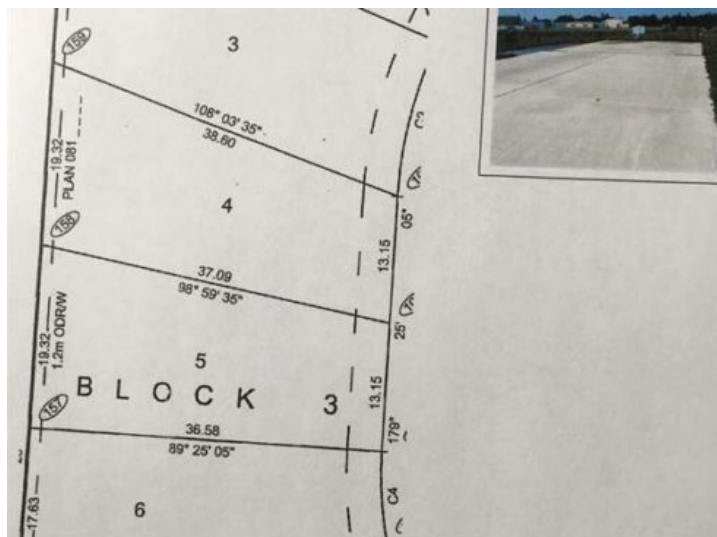


**7 Cherry Lane SE
Three Hills, Alberta**

MLS # A2270654



\$44,900

Division: NONE

Lot Size: 0.12 Acre

Lot Feat: No Neighbours Behind, Pie Shaped Lot, See Remarks

By Town: -

LLD: -

Zoning: MH

Water: -

Sewer: -

Utilities: -

Welcome to Cherry Lane, a quaint subdivision with beautiful prairie views on the outskirts of Three Hills, just 1 hour 36 to downtown Calgary, 1 hour 18 to Calgary International Airport and 1 hour 10 to Red Deer just a short drive into the Badlands. These lots are within walking distance of daycare, our k-12 public school, and a bustling downtown in a growing, friendly community. Three Hills has all the urban conveniences, some with a rural twist that will make your day, the security of local emergency and medical services, recreation, as well as strong senior and family services and more. Power, natural gas, water and sewer have already been incorporated into the actual building envelope, not just to the lot line, ready to hook up. Driveways and engineered concrete garage slabs, and engineered piles are already in place. Truly one of the best land value packages out there! Ready for the home of your dreams with site prep complete. This lot features a larger yard, end lot, a 24x30 oversized garage pad and longer driveway . Choose one lot or choose of 3 lots, currently backing onto green space in a quiet no through traffic cul de sac.