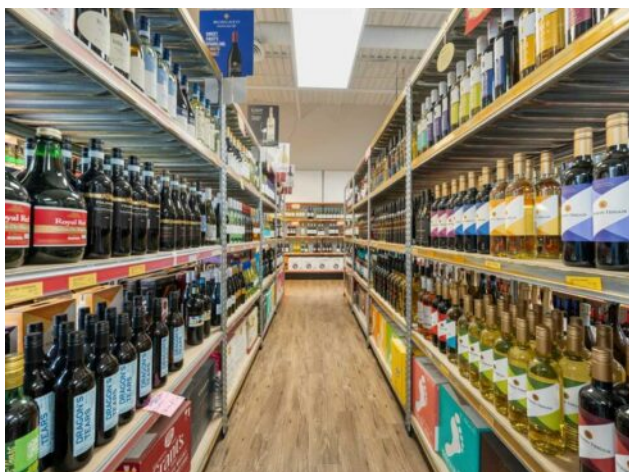


15/20, 2525 Bridlecrest Way SW  
Calgary, Alberta

MLS # A2268438



## \$300,000

**Division:** Bridlewood

**Type:** Retail

**Bus. Type:** Commercial ,Liquor Store

**Sale/Lease:** For Lease

**Bldg. Name:** Bridlewood Centre

**Bus. Name:** Leo Liquor Store

**Size:** 2,000 sq.ft.

**Zoning:** -

**Heating:** -

**Addl. Cost:** -

**Floors:** -

**Based on Year:** -

**Roof:** -

**Utilities:** -

**Exterior:** -

**Parking:** -

**Water:** -

**Lot Size:** -

**Sewer:** -

**Lot Feat:** -

**Inclusions:** See Equipment List

Excellent opportunity to own a Profitable Liquor Store in the desirable SW community of Bridlewood, Calgary. Located in a busy neighborhood strip mall surrounded by homes, Apartments, and other thriving businesses including a convenience store, pharmacy, doctor's offices, and a major pizza chain. This well-established store offers high visibility, easy access, and ample customer parking. Featuring a wide selection of wines, beers, coolers, and spirits, this store enjoys steady foot traffic and a loyal customer base from the surrounding community. The business shows consistent sales and strong margins, making it ideal for an owner-operator or investor looking for a turnkey opportunity. Sale includes all equipment, fixtures, and POS system. Inventory is extra at cost. Full Training will be provided to ensure a smooth transition. All showings by appointment only &mdash; PLEASE DO NOT APPROACH STAFF.