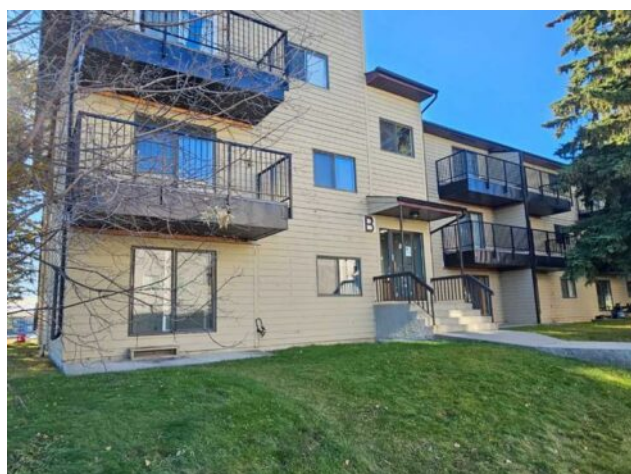


102, 1221B Westhaven Drive
Edson, Alberta

MLS # A2266161

\$63,900



Heating:	Baseboard, Boiler, Hot Water, Natural Gas	Water:	Public
Floors:	Carpet, Linoleum	Sewer:	Sewer
Roof:	Asphalt Shingle	Condo Fee:	\$ 473
Basement:	-	LLD:	-
Exterior:	Wood Frame, Wood Siding	Zoning:	R3
Foundation:	-	Utilities:	Cable, Electricity Connected, Garbage Collection, High Speed Internet
Features:	Chandelier, Laminate Counters, No Animal Home, No Smoking Home, Pantry, Storage		
Inclusions:	Light Fixtures, Window Coverings		

A fantastic investment opportunity awaits! This 2-bedroom, 1 bathroom condo has just been refreshed with new paint and window coverings and is move in ready. Features include a large entrance with a coat closet, spacious living area with a dining room, living room with sliding doors to the patio and a galley style kitchen with full sized fridge, stove, and dishwasher and there's plenty of cupboard space and a large pantry closet. The 2 bedrooms have large closets, the 4-piece bathroom has a tile tub surround and there's an in-suite storage room for added convenience. This main floor corner unit is 753 square feet and has lots of windows for natural light and all rooms have either carpet or linoleum. The building's laundry room is just down the hall and is operated by a Coinomatic card system. The large parking lot provides one powered spot for each unit. Wellington Court Condominiums are professionally managed by AV8 Solutions Ltd. and have very reasonable monthly condominium fees. Wellington Court is in the Westhaven neighbourhood, next to a school and around the corner from a convenience store/gas station, and recreation and other amenities are close by. This unit is currently vacant and available for quick possession. If you are looking to add to your investment portfolio, just starting out in the real estate market or looking for affordable housing, this Condo is worth a look.