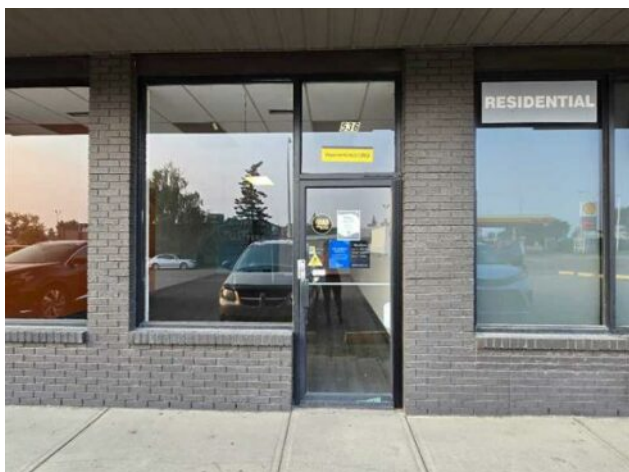


536 2 Avenue SE
Airdrie, Alberta

MLS # A2255430



\$4,320 per month

Division: Edmonton Trail

Type: Retail

Bus. Type: -

Sale/Lease: For Lease

Bldg. Name: -

Bus. Name: -

Size: 1,280 sq.ft.

Zoning: -

Heating: -

Addl. Cost: -

Floors: -

Based on Year: -

Roof: -

Utilities: -

Exterior: -

Parking: -

Water: -

Lot Size: -

Sewer: -

Lot Feat: -

Inclusions: n/a

FOR RENT 1280 SQFT! GREAT LOCATION FOR YOUR BUSINESS: SMALL CAFE, loan shop, take-out and most retailers are welcome here. Right off of Edmonton Trail and 2 Ave SE. Near many shops, offices, next to a hotel, and across from a gas station and antique mall. The Genesis Centre and other major retailers are just minutes away by foot and car. 1280 sqft of usable space. A larger bay that is 1911 sqft will be available as well in the near future. Possibility to combine the 2 units if in need of a larger bay.