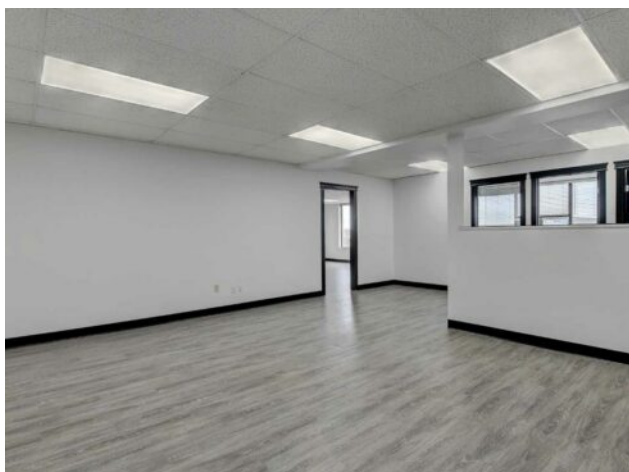


**C, 9022 108 Street
Grande Prairie, Alberta**

MLS # A2241660



\$2,500 per month

Division: Richmond Industrial Park

Type: Office

Bus. Type: -

Sale/Lease: For Lease

Bldg. Name: -

Bus. Name: -

Size: 1,746 sq.ft.

Zoning: IG

Heating: Central, Natural Gas

Floors: -

Roof: -

Exterior: Aluminum Siding , Concrete

Water: -

Sewer: -

Inclusions: N/A

Addl. Cost: -

Based on Year: -

Utilities: -

Parking: -

Lot Size: -

Lot Feat: -

Discover the potential of your new location, a second-floor commercial building offering 1746 sqft of total space. Situated on a bustling main street, this property enjoys high visibility and a steady flow of foot traffic. Recently renovated with vinyl flooring, paint, & LED lights, & in unit air conditioning. Creating a welcoming and professional atmosphere. The building offers the convenience of two 2-piece common area restrooms, ensuring ease of access for both staff and customers. With its prime location and desirable features, this commercial space presents an excellent opportunity for various businesses and ventures. Whether you're starting a new venture or expanding an existing one, this property offers the ideal setting to make your mark. \$2500/mo including all utilities(+ GST)!