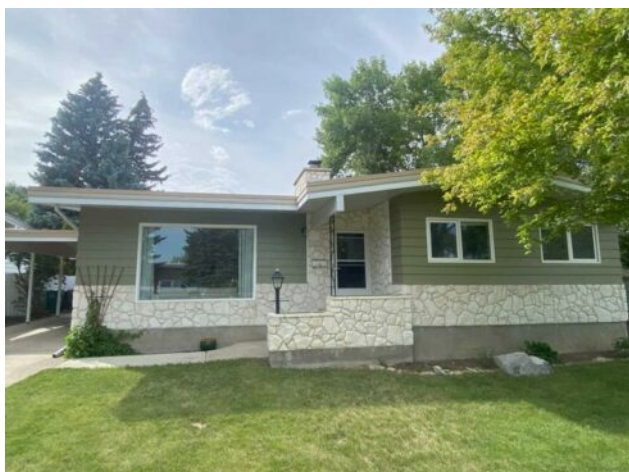


1602 Ashgrove Road S  
Lethbridge, Alberta

MLS # A2241535



**\$499,900**

<b>Division:</b>	Redwood		
<b>Type:</b>	Residential/House		
<b>Style:</b>	Bungalow		
<b>Size:</b>	1,382 sq.ft.	<b>Age:</b>	1971 (54 yrs old)
<b>Beds:</b>	4	<b>Baths:</b>	3
<b>Garage:</b>	Off Street, Single Garage Detached		
<b>Lot Size:</b>	0.16 Acre		
<b>Lot Feat:</b>	Back Lane		

<b>Heating:</b>	Hot Water	<b>Water:</b>	-
<b>Floors:</b>	Carpet, Tile, Vinyl Plank	<b>Sewer:</b>	-
<b>Roof:</b>	Membrane	<b>Condo Fee:</b>	-
<b>Basement:</b>	Finished, Full	<b>LLD:</b>	-
<b>Exterior:</b>	Stucco, Wood Frame	<b>Zoning:</b>	R-L
<b>Foundation:</b>	Poured Concrete	<b>Utilities:</b>	-
<b>Features:</b>	See Remarks		

**Inclusions:** N/A

Stunning bungalow in a highly desirable area. Close to Redwood park and close to all amenities! 4 bedrooms plus office. Brand new flooring, windows, paint, gourmet kitchen and more. Upstairs has been completely renovated. A rarity to find an almost 1400 sq ft bungalow in a prestige area for under 500k. Fully developed. Inside you'll find two huge bedrooms on the main floor. Spacious kitchen with separate dining area give room for a large or growing family. Tons of parking with carport and super single garage featuring a brand new overhead door. This home needs nothing and is in move in ready condition. If you've been looking for newer homes on the Southside but the lot sizes and yards don't measure up ad this one to your list!