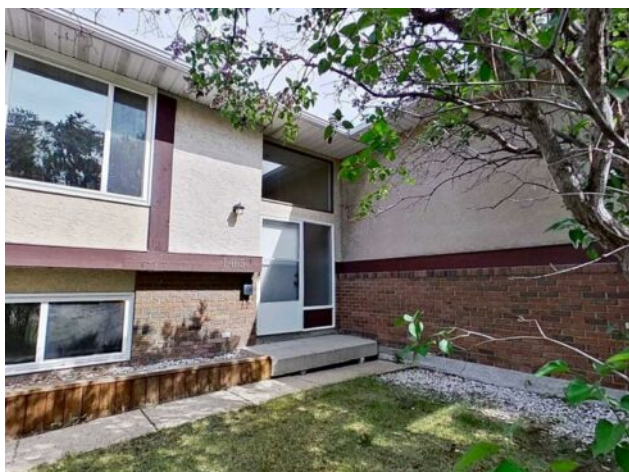


105 Fonda Court SE  
Calgary, Alberta

MLS # A2228791

**\$365,000**



<b>Division:</b>	Forest Heights		
<b>Type:</b>	Residential/Duplex		
<b>Style:</b>	2 Storey Split, Attached-Side by Side		
<b>Size:</b>	985 sq.ft.	<b>Age:</b>	1978 (47 yrs old)
<b>Beds:</b>	2	<b>Baths:</b>	1
<b>Garage:</b>	Parking Pad		
<b>Lot Size:</b>	0.08 Acre		
<b>Lot Feat:</b>	Back Yard, See Remarks		

<b>Heating:</b>	In Floor, Fireplace(s), Forced Air, Natural Gas, Wood	<b>Water:</b>	-
<b>Floors:</b>	Carpet, Ceramic Tile, Hardwood	<b>Sewer:</b>	-
<b>Roof:</b>	Asphalt Shingle	<b>Condo Fee:</b>	-
<b>Basement:</b>	Finished, Full	<b>LLD:</b>	-
<b>Exterior:</b>	See Remarks, Stucco, Wood Siding	<b>Zoning:</b>	R-CG
<b>Foundation:</b>	Poured Concrete	<b>Utilities:</b>	-
<b>Features:</b>	Laminate Counters, No Smoking Home, Open Floorplan		

**Inclusions:** N/A

This lovely bi-level half-duplex is located on a large corner lot in a quiet cul-de-sac in the family-oriented neighbourhood of Forest Heights. The upper level features an open-concept design and hardwood flooring. The living room is graced with a wood-burning fireplace for those cooler winter evenings. Large windows overlook the spacious west-facing front yard, where you'll enjoy the sight and scent of mature lilac bushes in the spring. The dining area opens onto a large 150 sq. ft. recently restrained rear deck, with steps leading to the fully fenced backyard complete with a spacious 110 sq. ft. storage shed and a fire pit. Here, you can relax, entertain family and friends, and provide your pet with a safe place to roam. The kitchen features a refrigerator, dishwasher, stove with over-the-range microwave/vent, and an Insinkerator garbage disposal. You'll find ample storage space in the floor-to-ceiling cabinets. New flushmount light fixtures, each with adjustable colour tones, give a modern flair. A laundry area with a sleek-looking full-sized, stacked washer and dryer completes the main floor. On the lower level, you will find two bedrooms, a four-piece bathroom with in-floor heating, furnace room, and storage area. New upgrades on this level include carpet, furnace, hot water tank, toilet, light fixtures, and door hardware. A security system is already installed with the option to transfer it into the new owner's name. With fresh paint throughout, the space is ready for your personal touch. A 2-car parking pad provides convenient off-street parking. This home is steps away from access to an extensive pathway system and a large dry pond area with a baseball diamond and excellent winter sledding hills. Nearby you'll find shopping, schools, all community services, and easy access to downtown via Memorial Drive, the Marlborough

C-Train station, and bus routes.