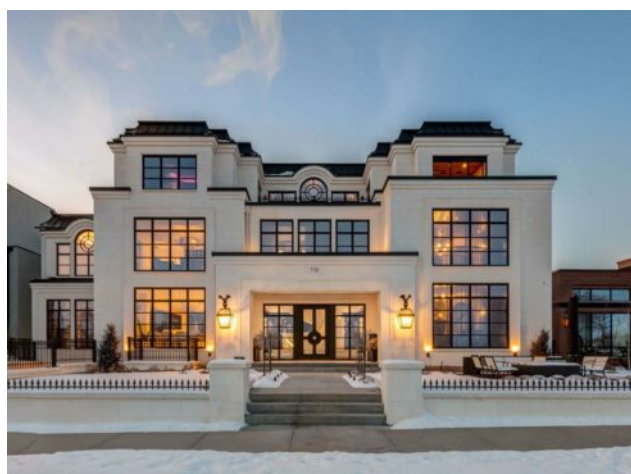


**732 Crescent Road NW
Calgary, Alberta**

MLS # A2220099



\$13,500,000

Division:	Rosedale		
Type:	Residential/House		
Style:	2 and Half Storey		
Size:	8,778 sq.ft.	Age:	2022 (4 yrs old)
Beds:	6	Baths:	7 full / 3 half
Garage:	Oversized, Single Garage Attached, Triple Garage Attached		
Lot Size:	0.27 Acre		
Lot Feat:	Back Lane, Back Yard, Front Yard, Landscaped, Level, Low Maintenance Land		

Heating: In Floor, Fireplace(s), Forced Air, Natural Gas

Floors: Carpet, Hardwood, Tile

Roof: Flat Torch Membrane

Basement: Full

Exterior: Other, Wood Frame

Foundation: Poured Concrete

Water: -

Sewer: -

Condo Fee: -

LLD: -

Zoning: R-CG

Utilities: -

Features: Bar, Bookcases, Breakfast Bar, Built-in Features, Central Vacuum, Chandelier, Closet Organizers, Double Vanity, Elevator, High Ceilings, Kitchen Island, No Smoking Home, Open Floorplan, Pantry, Quartz Counters, Recessed Lighting, Soaking Tub, Steam Room, Storage, Walk-In Closet(s), Wet Bar, Wired for Sound

Inclusions: AC X4, 36" Subzero Fridge with Bottom Freezer X3, Cove Dishwasher X3, 48" Wolf Gas Range Top with Integrated Hood Fan, 30" Wolf Steam Oven, 30" Wolf Microwave Oven, 30" Wolf Double Wall Ovens, Warming Drawer X3, Enomatic Wine Serving System, Under cabinet Bar Fridge X3, Wolf BBQ with Hood, Stacked Washer/Dryer X3, 30" Subzero Wine Fridge X2 (full height), Forno Pizza Oven, Couches, Tables & Chairs, Patio Furniture, Fire Table, Beds, Indoor Plants (as is condition), Pillows, Area Rugs, All TV's, Playhouse, Books on Main Floor of Library, Office Desk, Solar Panels, Steam Generator, Speakers with Equipment Stack, Garage Cabinets, Security System

Stunning legacy estate situated on 100 feet of frontage on Calgary's most coveted street—Crescent Road—offering unparalleled views of the downtown skyline and river valley. This architectural masterpiece boasts over 11,400 sq ft of living space, crafted by boutique luxury builder Maillot Homes in collaboration with Paul Lavoie Interior Design, who drew inspiration from Alice in Wonderland to create a whimsical yet refined family retreat. Built as a forever home and completed in 2022, no expense was spared. The exterior is clad in full-bed Turkish limestone, and the home features high-velocity heating and cooling, an elevator, a roof-mounted solar array, and premium designer finishes throughout. The chef's kitchen is equipped with a Sub-Zero/Wolf appliance package, steam oven, warming drawers, heated floors, custom millwork with liquid metal finishes, a pot filler, and a fully outfitted butler's pantry. A highlight of the home is the two-storey library, inspired by Dumbledore's office in the Harry Potter series—complete with thousands of books, cozy reading nooks, and sweeping city views. The primary retreat features dual private ensuites and walk-in closets, with spa-level features including a steam shower, soaker tub, towel warming drawer, heated floors, custom cabinetry, electronic window coverings, and even a rotating shoe carousel. Additionally, the upper level includes three spacious bedrooms, each with walk-in closets and private ensuites, plus a large laundry room with discreet access from the primary suite. The top floor showcases an elegant lounge with a full bar, wine tasting room, covered patio with gas fireplace, and a designer powder room. Silver-leaf ceilings & a solvable floor maze add to this glamorous space. The lower level mimics a private sports club with an impressive custom gym with soaring ceilings

(over 11 feet), nanny quarters, guest suite, recreational room with surround sound, extra laundry, secondary mud room, and ample storage. Outdoors, enjoy the expansive backyard with a retractable-screen patio, gas heaters, fireplace, outdoor dining area, pizza oven, and playhouse. Car enthusiasts will appreciate two heated, attached garages with epoxy floors, custom cabinetry, and a heated front driveway. Ideal for families and grand-scale entertaining, properties of this caliber on the Ridge are extremely rare, this one-of-a-kind estate is a must see.