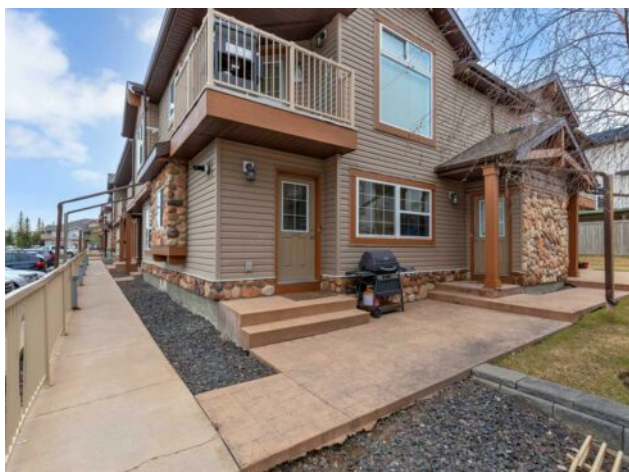


105, 90 Panatella Landing NW
Calgary, Alberta

MLS # A2215976



\$279,999

Division:	Panorama Hills		
Type:	Residential/Other		
Style:	Townhouse-Stacked		
Size:	814 sq.ft.	Age:	2008 (17 yrs old)
Beds:	2	Baths:	1
Garage:	Assigned, Stall		
Lot Size:	-		
Lot Feat:	Landscaped, Level		

Heating:	Hot Water, Natural Gas	Water:	-
Floors:	Carpet, Linoleum	Sewer:	-
Roof:	Asphalt Shingle	Condo Fee:	\$ 220
Basement:	None	LLD:	-
Exterior:	Vinyl Siding, Wood Frame	Zoning:	DC
Foundation:	Poured Concrete	Utilities:	-
Features:	No Animal Home, No Smoking Home		

Inclusions: N/A

BEST PRICED 2 BEDROOM UNIT IN THE COMPLEX. Welcome to your new home! offering 814 SQ FT of living area. This end-unit stacked townhouse in the desirable community of Panorama hills is an excellent choice for first-time buyers or savvy investors. Featuring two spacious bedrooms, this condo offers ample living space and modern amenities. Step into the large living room, perfect for relaxing or entertaining, seamlessly connected to an open kitchen that boasts a central island, ideal for casual dining and meal prep. Enjoy the convenience of in-suite laundry, complete with a washer and dryer, and take advantage of the generous storage area to keep your living space organized. This condo is strategically located close to schools, playgrounds, and public transit, making it an ideal spot for families and commuters alike. You'll also find shopping options just a stone's throw away, along with easy access to downtown. Don't miss out on this fantastic opportunity to own a beautiful home in a vibrant community! Schedule your viewing today!